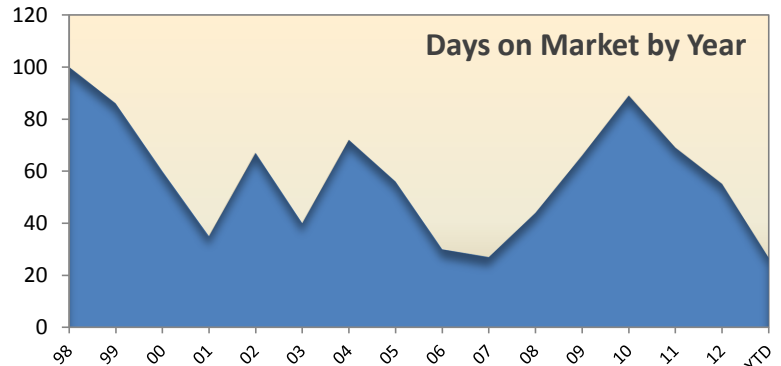
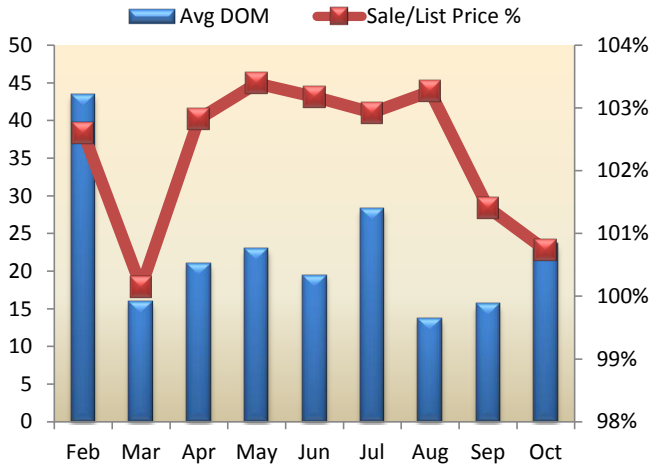
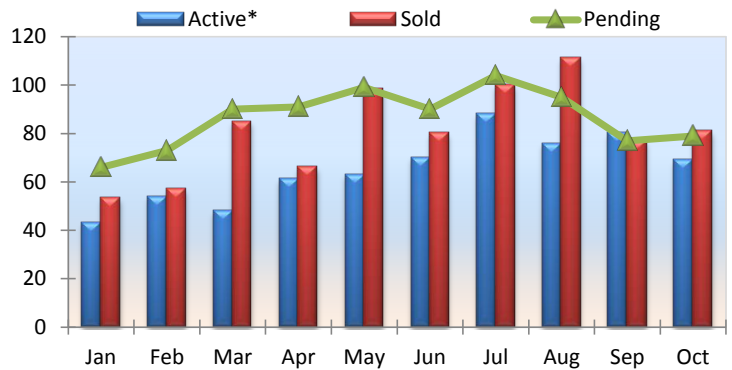
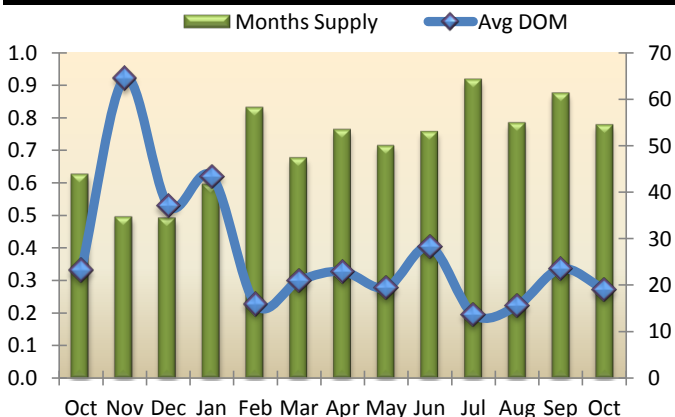


Days on Market (DOM) for the Livermore area year-to-date is around 27. The median detached home price in Livermore for October was \$540,000. As of the last day of October there were 69 active homes in Livermore. At current selling rates this means there is approximately 1 month of inventory in Livermore remaining.



Summary Analysis (Single Family Residential)

	Active*	Pending	Sold	Months Supply	Avg List Price Sold	Median Sale Price	Avg Sale Price	Average DOM	Avg \$ Sqft List	Avg \$ Sqft Sold	Sale Price/List Price
Oct 12	57	102	69	0.6	\$510,084	\$440,000	\$515,555	23	\$259	\$263	101.07%
Nov 12	42	66	80	0.5	\$476,071	\$409,000	\$468,808	65	\$242	\$238	98.47%
Dec 12	37	55	73	0.5	\$599,205	\$500,000	\$607,725	37	\$271	\$278	101.42%
Jan 13	43	66	53	0.6	\$525,107	\$465,000	\$534,069	43	\$281	\$289	101.71%
Feb 13	54	73	57	0.8	\$569,478	\$500,000	\$584,320	16	\$288	\$297	102.61%
Mar 13	48	90	85	0.7	\$637,281	\$550,000	\$638,233	21	\$312	\$316	100.15%
Apr 13	61	91	66	0.8	\$620,298	\$578,000	\$637,831	23	\$300	\$311	102.83%
May 13	63	99	98	0.7	\$574,752	\$550,000	\$594,225	19	\$319	\$333	103.39%
Jun 13	70	90	80	0.8	\$553,958	\$545,000	\$571,540	28	\$318	\$331	103.17%
Jul 13	88	104	100	0.9	\$643,830	\$563,013	\$662,680	14	\$320	\$330	102.93%
Aug 13	76	95	111	0.8	\$594,194	\$575,000	\$613,592	16	\$322	\$334	103.26%
Sep 13	80	77	77	0.9	\$650,294	\$580,000	\$659,469	24	\$328	\$335	101.41%
Oct 13	69	79	81	0.8	\$594,022	\$540,000	\$598,368	19	\$341	\$345	100.73%
Month to Month	Sold	%Change	Avg list	% Change	Median Sale Price	% Change	Avg Sale Price	% Change	Avg DOM	% Change	Sale Price/List Price
Oct 13	81	17.39%	\$594,022	16.46%	\$540,000	22.73%	\$598,368	16.06%	19	-17.74%	100.73%
Oct 12	69	-1.43%	\$510,084	6.24%	\$440,000	7.58%	\$515,555	8.37%	23	-42.44%	101.07%
Oct 11	70	18.64%	\$480,139	-11.42%	\$409,000	-3.76%	\$475,746	-8.54%	40	21.77%	99.08%



YTD Sold Summary					
Range	2013 # listings	2012 # listings	2011 # listings	2010 # listings	2009 # listings
< 300k	16	100	105	80	97
\$300k-399k	75	230	221	170	180
\$400k-499k	205	216	166	192	164
\$500k-599k	221	86	80	81	83
\$600k-699k	108	79	61	53	71
\$700k-799k	81	73	45	56	45
\$800k-899k	46	38	41	33	35
\$900k-999k	33	21	19	20	17
\$1m-1.5m	55	14	19	24	11
\$1.5m-2.0m	3		2		
\$2m +	2	2		2	
Totals:	845	859	759	711	703

*as of the last day of the month at 11:59 pm PST **reflects change from 2005